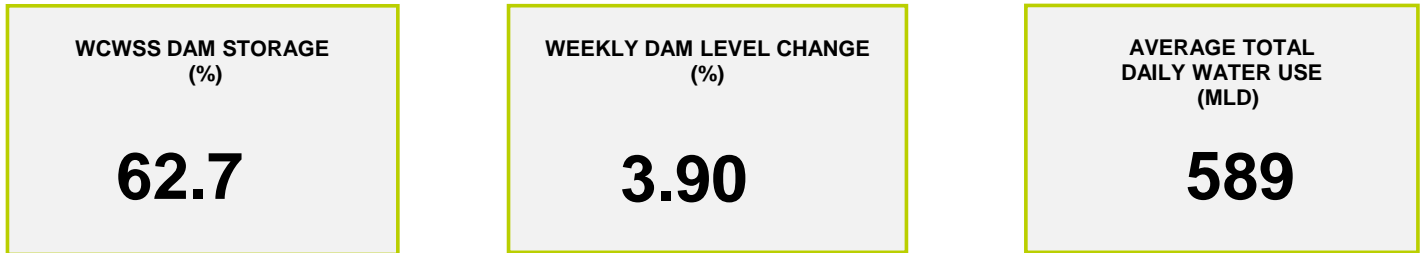
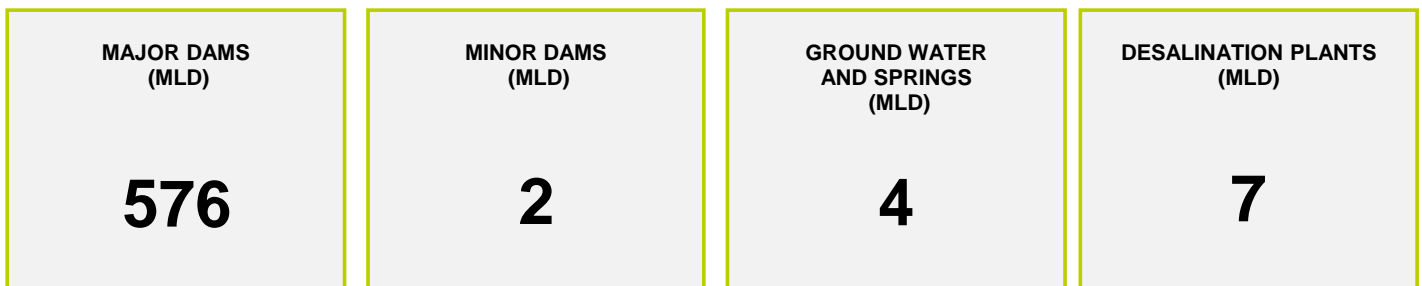




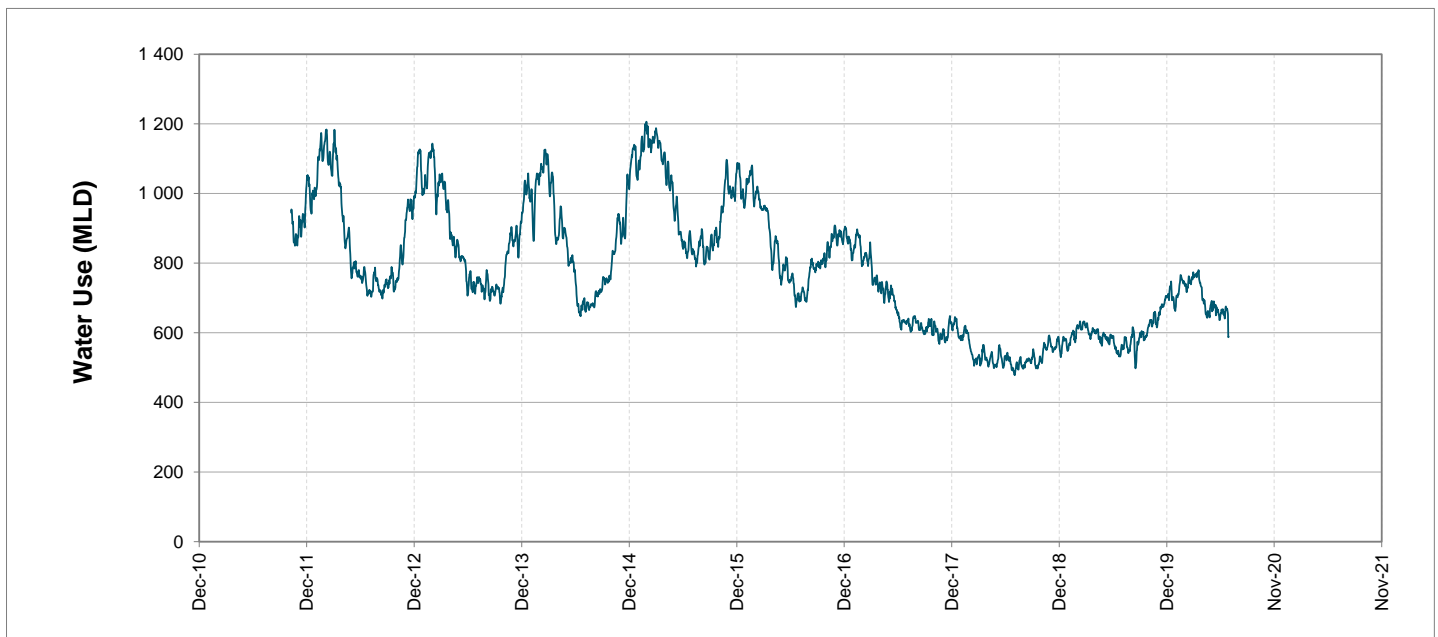
Headline Statistics



Water Production from Different Sources



Overall Water Usage Trend (2010 - Present)



WCWSS means Western Cape Water Supply System

MLD means million litres per day

More information on Water Saving and Restrictions is available on the City of Cape Town's 'ThinkWater' website

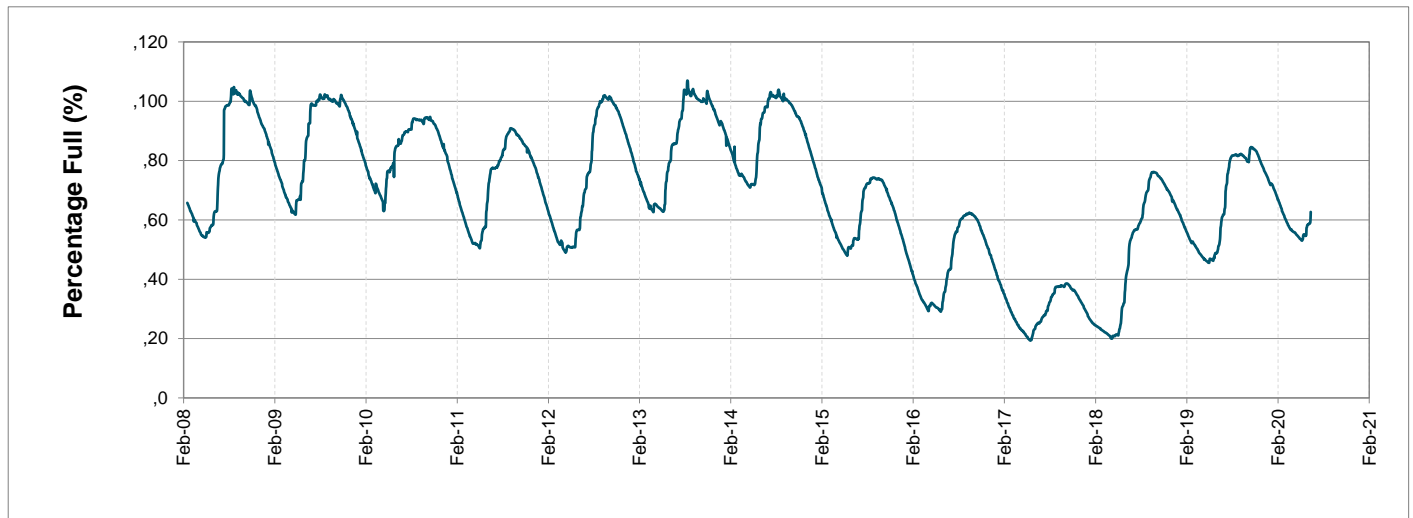
Water Stored in Major Dams (WCWSS)

Overall Percentage Full **62.7%**

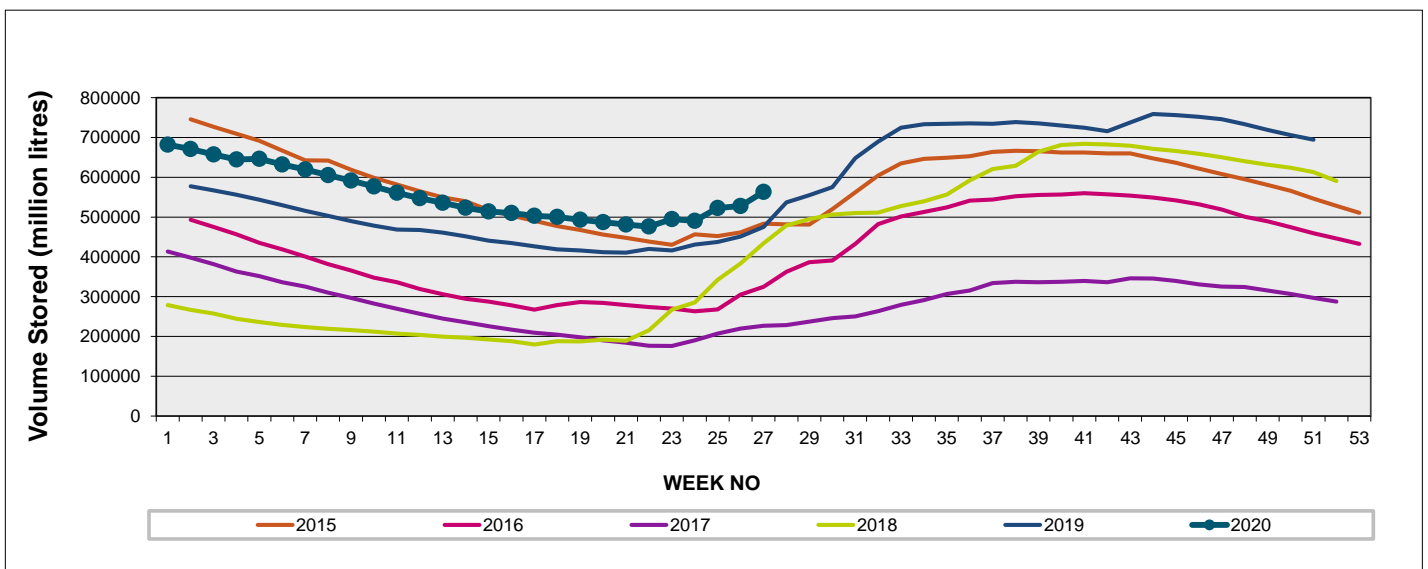
Weekly Change **3.9%**

MAJOR DAMS (WCWSS)	STORAGE						
	CAPACITY	%	%	%	%	%	%
	MI	29 June 2020	Previous week	2019	2018	2017	2016
BERG RIVER	130 010	81.7	74.5	77.3	70.1	36.8	40.8
STEENBRAS LOWER	33 517	51.0	49.9	42.4	47.7	29.9	39.3
STEENBRAS UPPER	31 767	100.7	99.6	63.9	95.4	60.9	73.3
THEEWATERSKLOOF	480 188	59.7	55.8	43.9	31.4	19.1	35.0
VOËLVLEI	164 095	56.1	54.5	57.8	39.9	19.6	29.5
WEMMERSHOEK	58 644	49.6	43.3	42.1	72.4	37.2	52.4
TOTAL STORED	898 221	563 058	527 821	465 249	396 005	223 016	336 852
% STORAGE		62.7%	58.8%	51.8%	44.1%	24.8%	37.5%

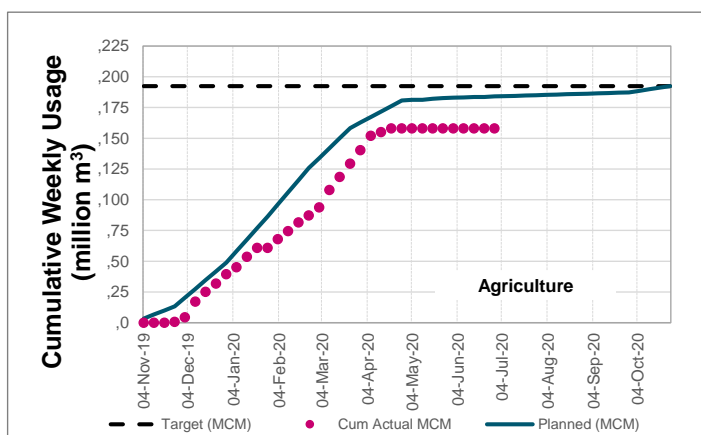
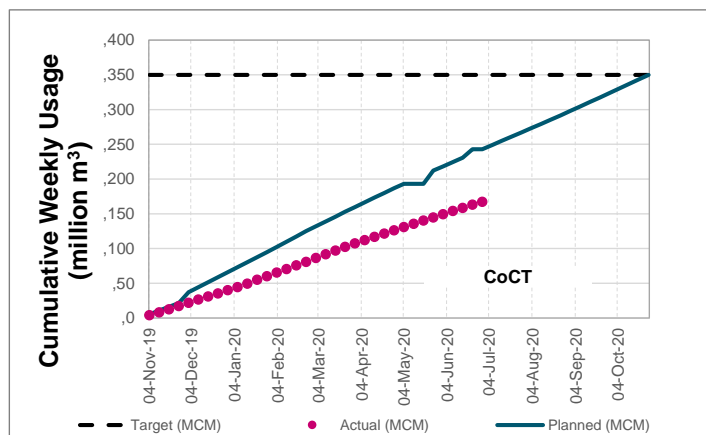
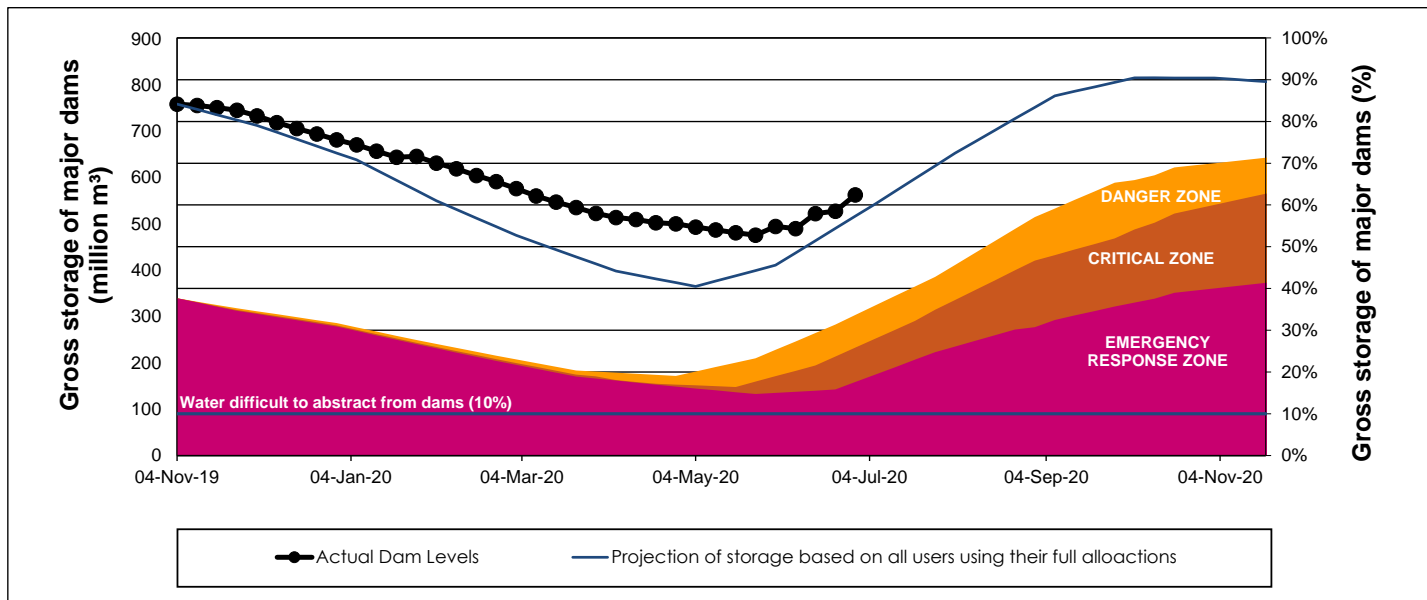
WCWSS Storage Record (2008 - Present)



WCWSS Comparative Storage Graph (5 Years)



WCWSS Dam Storage and Water Use Tracking



Water Stored in Minor Dams

Overall Percentage Full **69.3**

Weekly Change **4.52**

MINOR DAMS	STORAGE						
	CAPACITY	%	%	%	%	%	%
	MI	29 June 2020	Previous week	2019	2018	2017	2016
ALEXANDRA (Table Mountain)	126	50.8	47.2	13.5	89.2	42.0	34.7
DE VILLIERS (Table Mountain)	243	100.5	100.3	79.4	86.8	58.2	96.0
HELY-HUTCHINSON (Table Moun)	925	79.4	64.0	66.3	100.8	100.3	94.1
KLEINPLAATS (Simon's Town)	1 368	37.3	36.2	40.6	60.1	37.9	46.1
LAND-EN-ZEEZICHT (Helderberg)	451	70.0	67.4	89.2	90.2	67.5	27.4
LEWIS GAY (Simon's Town)	182	48.2	38.9	0.0	100.9	31.8	1.2
VICTORIA (Table Mountain)	128	102.3	100.4	36.5	71.4	96.6	35.2
WOODHEAD (Table Mountain)	954	100.3	99.9	72.1	100.2	93.4	75.0
Total Stored	4 377	3033.6	2835.9	2509.1	3689.3	3006.9	2642.5
Percentages stored		69.3	64.8	57.3	84.3	68.7	60.4

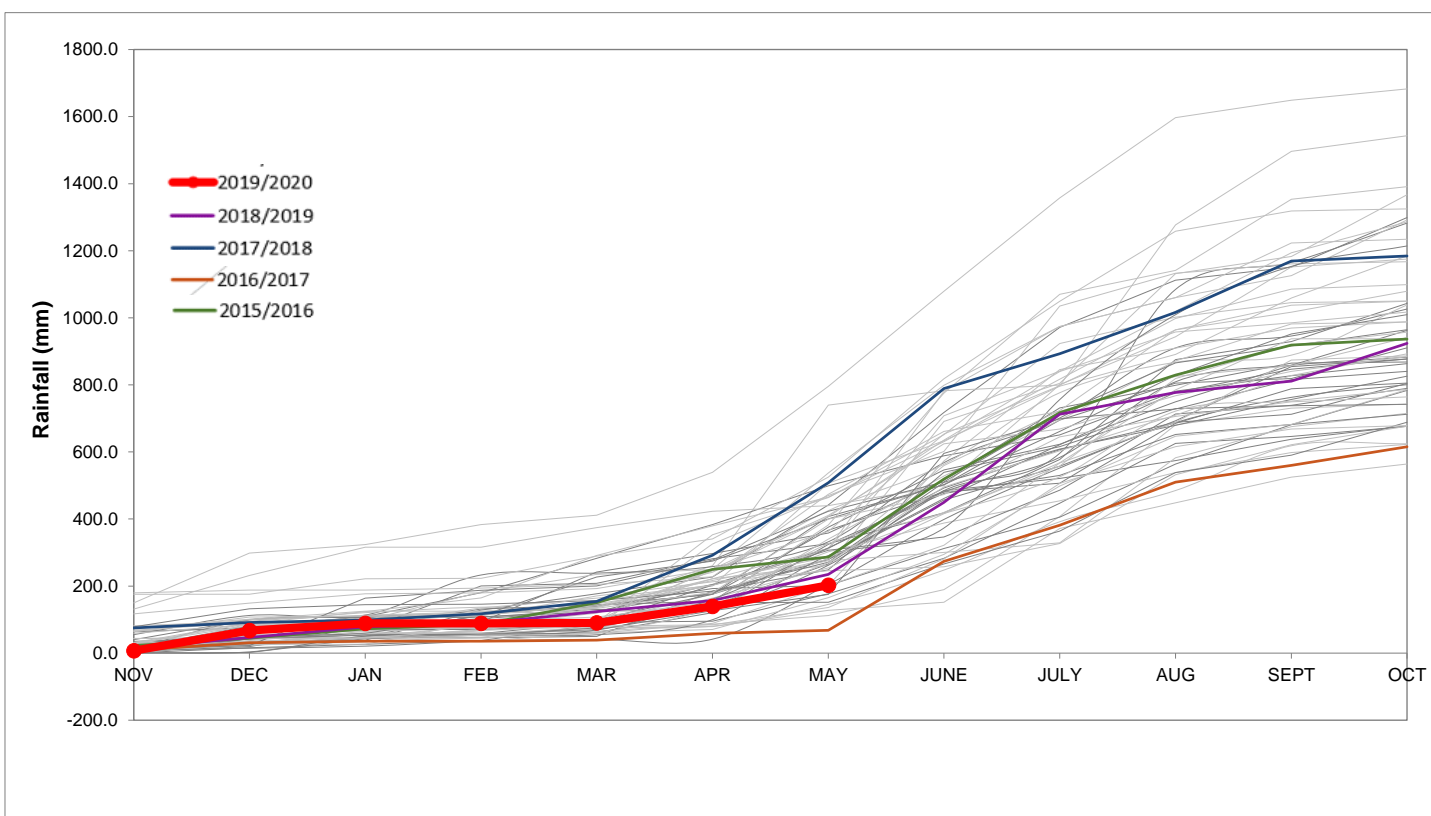
Rainfall Recorded

RAINFALL (mm)	23-Jun	24-Jun	25-Jun	26-Jun	27-Jun	28-Jun	29-Jun	Jun	
								Total*	LT Average
Blackheath Upper	0.0	0.0	12.0	2.5	9.5	1.2		71.2	73.3
Brooklands	1.0	0.0	20.0	3.0	16.0	1.0		129.0	138.9
Newlands	0.0	0.0	36.0	7.0	46.5	0.6		234.8	292.4
Steenbras	0.0	0.0	19.5	7.3	15.7	2.5		93.0	155.4
Table Mountain (Woodhead)	0.0	0.0	34.5	4.0	15.0			164.0	242.4
Theewaterskloof	0.0	0.0	13.1	0.0	0.0	24.0		97.4	71.6
Tygerberg	0.0	0.0	15.0	2.3	17.5	0.0		84.5	93.6
Voëlvllei	0.0	0.0	13.0	6.0	15.0	0.5		86.6	116.8
Wemmershoek	0.0	0.0	32.7	17.7	41.0	0.0		218.3	188.9
Wynberg	0.0	0.0	20.0	3.0	30.0	7.0		136.6	176.7

Notes: *Total/cummulative rainfall for month indicated above
LT: Long Term

Accumulated Monthly Rainfall at Wemmershoek

Note: Wemmershoek station used due to long record and mountaneous location



Drinking Water Quality

SAMPLE PASS RATE

Month	Water Quality Compliance (%)	Target (%)
Mar-19	99.01	98
Apr-19	99.10	98
May-19	99.08	98
Jun-19	99.09	98
Jul-19	99.04	98
Aug-19	99.02	98
Sep-19	98.99	98
Oct-19	99.03	98
Nov-19	99.14	98
Dec-19	99.09	98
Jan-20	99.07	98
Feb-20	99.08	98
Mar-20	99.17	98
Apr-20	99.16	98
May-20	99.20	98

Notes:

This table shows CCT drinking water quality compliance according to the South African National Standard 241:2015. Compliance, measured against all prescribed chemical and microbiological components, consistently exceeds the very high CCT target of 98%. (Overall compliance percentages of continuous sampling and analysis are released on a monthly basis.)